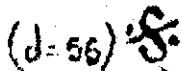
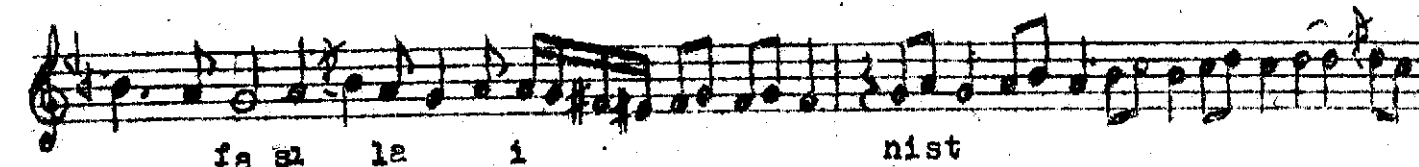
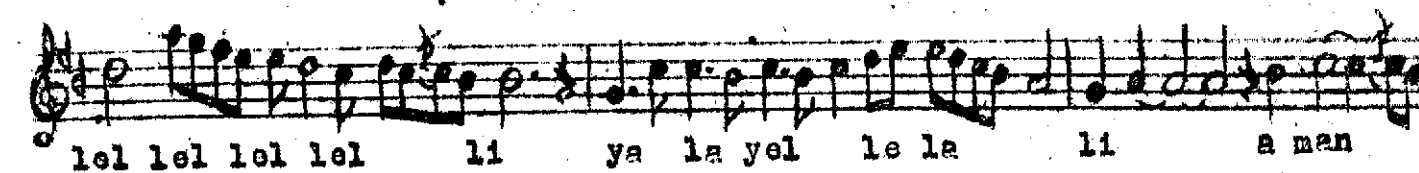
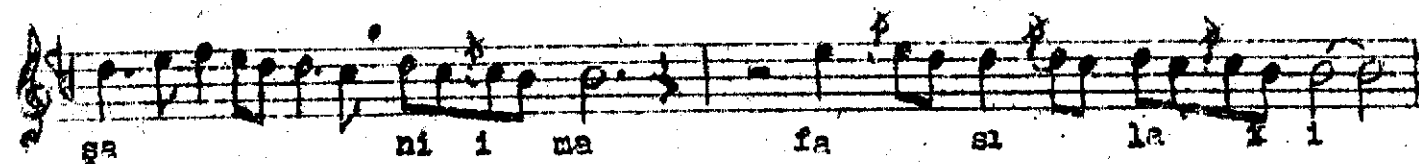
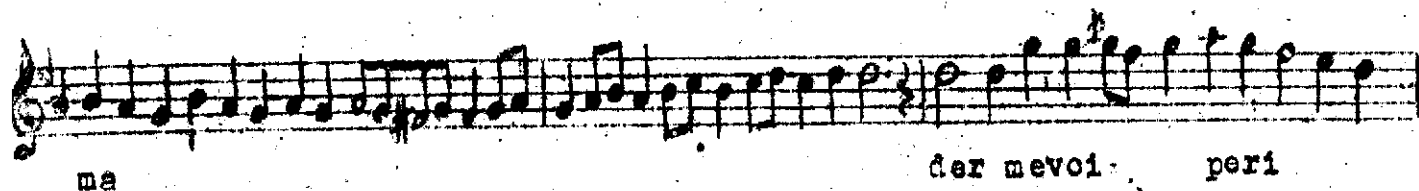
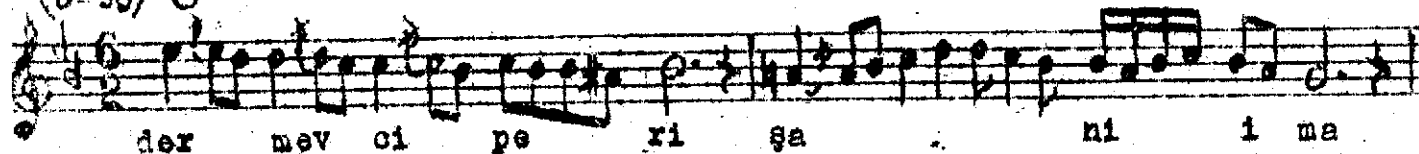


Ağır Semaî

S E G Â H  
ağır semaî

Buhurî Zâde  
Mustafa İtîrî

(♩=56) 



Sema

Bu yi gu lu ba di se he ri


ri

bu yigul ba di se ne ri ber se ri ra

ber so ri ra ber se ri ra hend

oe nim yel le le lel lel lel lel lel 11

mi rımyel le la li canımyellel lel


  
 lol lel lellei li ya la yelle la li amen

ber se ri ra hend

ber se ri ra hend